

Welcome to the Autumn edition of the Suite newsletter. It is a busy time here in Salford as we reach the end of 2011. Please join us at the end of November for 2 special Suite events; a showing of a selection of Suite artists at Cornerhouse and our annual Open Studios, more about both below. We are also delighted to welcome Julie Cassels as a new associate member. We currently have space to add a couple more associate members to our group; so if you'd like to join us (ideal for those artists who don't need an actual studio to work in, but would like the support and critical contact that comes from being part of Suite) then please contact lesley@lesleyhalliwell.co.uk with 2/3 of images of your work, a cv and/or weblink.

Read on to find out about some of the exciting things Suite artists are up to at the moment....

EXHIBITIONS AND EVENTS



There are plenty of opportunities to see **Andrew Bracey's** artworks this month. During October he is in residence at Standpoint Gallery in London. He is planning to make the most of his sojourn to the capital and intends to spend time in the National Gallery to make new work as an extension of his *ReconFigure* paintings. Join Andrew on Thursday 27th October at 6pm at the gallery for an artist's talk and an opportunity to see the new work he has made. However if you happen to be in Manchester on the 27th then please go along to Manchester Contemporary art fair where you can see the aforementioned *ReconFigure* paintings in a solo booth with the excellent Castlefield gallery, as well as seeing other works, *Clout* and *Various Titles* that he is showing with Mermaid & Monster. The art fair continues until Sunday 30th October and free tickets can be got in advance from the website. Andrew is also showing his work, *Frames* with Transition Gallery in their stand at Sluice art fair in London over Frieze art fair weekend, 15-16 October. *Clout* is also on show in Space Exchange at Aid & Abet, an artist run space in Cambridge, alongside other works from Liverpool's Royal Standard's art collection, until 29th October. Finally you can view the latest *UnMasterclasses*, an irreverent video (un)guide in how not to learn to paint. All links to these exhibitions can be found at www.andrewbracey.blogspot.com



Rise Up and Build is a new exhibition at the Chapel Gallery in Ormskirk to mark the 50th anniversary of Skelmersdale New Town, artists **Jane Fairhurst** and Tim Fielding exhibit their site-specific installation *History of the Future*, alongside archive and contemporary film footage, rediscovered architect models and paintings commissioned from the official 'town artist' (1964-5). This is a rare insight into this town's fascinating history. The show continues until 12th November. www.chapelgallery.org.uk



Suite is delighted to welcome **Julie Cassels** to our ranks. Julie says "I am really pleased to be a new Associate Member of Suite Studio Group. My latest series of work considers the replication of an object and the relevance of its source. Drawn to potentially obsolete 'found objects' I digitally reconstruct them; their associations bring together, the past, the future, memory and expectation."

Julie uses the photographic image as her medium and is fascinated by the relationship between the photograph, the photographic sequence and the moving image. She produces work in a variety of forms including photographic collage, video installation and digitally reconstructed objects.

The inspiration for her work comes from an obsessive interest in the presence of clothing and textiles in figurative art, through out history, and its relevance.

We look forward to seeing more of Julie's work and her participation in Suite's lively studio Crits soon.

Susie MacMurray is busy preparing for her solo show at Agnew's Gallery on Albermarle Street in London, which runs from 9th November - 2nd December. This is the first time her large drawings and a number of new sculptures will be shown together. Agnew's are publishing a catalogue to accompany the exhibition and Kathleen Soriano, Head of Exhibitions & Collections at the Royal Academy is writing an introductory essay on Susie's work.



Susie recently completed a commission, *Herd* for the Meadow Arts group exhibition *House of Beasts* at the National Trust property Attingham Park near Shrewsbury. *House of Beasts* runs until July 2012. Her garment sculpture *Widow*, which now belongs to Manchester Art Gallery is also currently on display at the Victoria & Albert Museum in *The Power of Making*.

Finally Susie's very first installation *Stratum* was reinstalled in the attic at Islington Mill for its 10th anniversary in June and can still be viewed there by appointment for the rest of the year.

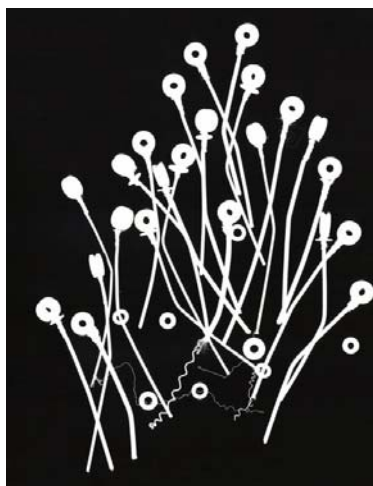
<http://www.agnewsgallery.com/pressrelease/susie-macmurray>

<http://www.meadowarts.org/page.php?Plv=2&P1=&P2=21>

<http://www.vam.ac.uk/content/exhibitions/power-of-making/power-of-making>

<http://www.islingtonmill.com>

Susie, along with many of Suite's members including **Lesley Halliwell** and **Tim Machin** will be showing work at Cornerhouse Projects from 24th November until 18th December. To kick off the show Cornerhouse are hosting a fabulously sounding Art Night; "A social shindig for anyone who loves art, likes art, hates art or makes art! Art Night is an informal opportunity for debate around the value of creative practice in our increasingly cash-strapped economy. We'll also be launching our latest Cornerhouse Project which will feature a range of affordable prints and original artwork. Plus there'll be a screening of the vintage Tony Hancock comedy *The Rebel*." Come along to see the art and you might even walk away with an artwork from a suite artist.



www.cornerhouse.org/art/art-exhibitions/suite-studios

Fiona Donald has started an M.A in Fine Art at Manchester Metropolitan University. Her current practice incorporates the use of drawing, painting and camera-less photography. She will be researching the idea of 'trace' as a thematic thread, exploring the differing relationships between the objects and the space they occupy, transforming marks in to traces left behind to comment on what is ephemeral, reoccurring, and universal. ▼



Jo Scolah's most recent piece *Sublime Connection*, was shown in the Exhibition, *Memory Blanks*, at the Axis Arts centre, Crewe. The work deals with the networks enabling the sharing of thoughts that often act as a security blanket, wrapping the body with limitless methods of communication. Becoming tangled in this web, can offer comfort but can also lead to the necessity to escape.

Jo is currently working on a collaborative project due to be exhibited next February. ▲

***STOP PRESS * STOP PRESS * STOP PRESS * STOP PRESS * STOP PRESS * STOP PRESS ***

Suite Studio's annual open studio will be happening as usual at the end of November, just in time for everyone to come along and see what the Suite artists have been up to this year artistically and to of course sample some mince pies and refreshments. This year we have our Friday night opening on 25th November from 6-9pm (the day after the Cornerhouse shindig, as the eagle eyed among you will have spotted!). We are then open on Saturday 26th and Sunday 27th November, both days from 11-4pm. Please do come along and join us and also see work by artists in Hot Bed Press and Cow Lane Studios who we share the Casket Works building with.

***STOP PRESS * STOP PRESS * STOP PRESS * STOP PRESS * STOP PRESS * STOP PRESS ***

Newsletter information:

The Suite Newsletter is an e-mailer sent out roughly 2 times a year.

It represents a selection of the exhibitions and events that Suite artists are involved in around the country and beyond. The list is not exhaustive and further information can be found on the main Suite website.

If you have seen an exhibition of one of Suite's artists and would like to write a few words about it, please email lesley@lesleyhalliwell.co.uk. A couple of sentences will do – no need for a full-scale review.

To be taken off our mailing list please email lesley@lesleyhalliwell.co.uk.

Suite Studio Group, Casket Works, Ground Floor, Cow Lane, Salford M5 4NB.

www.suite-studiogroup.co.uk

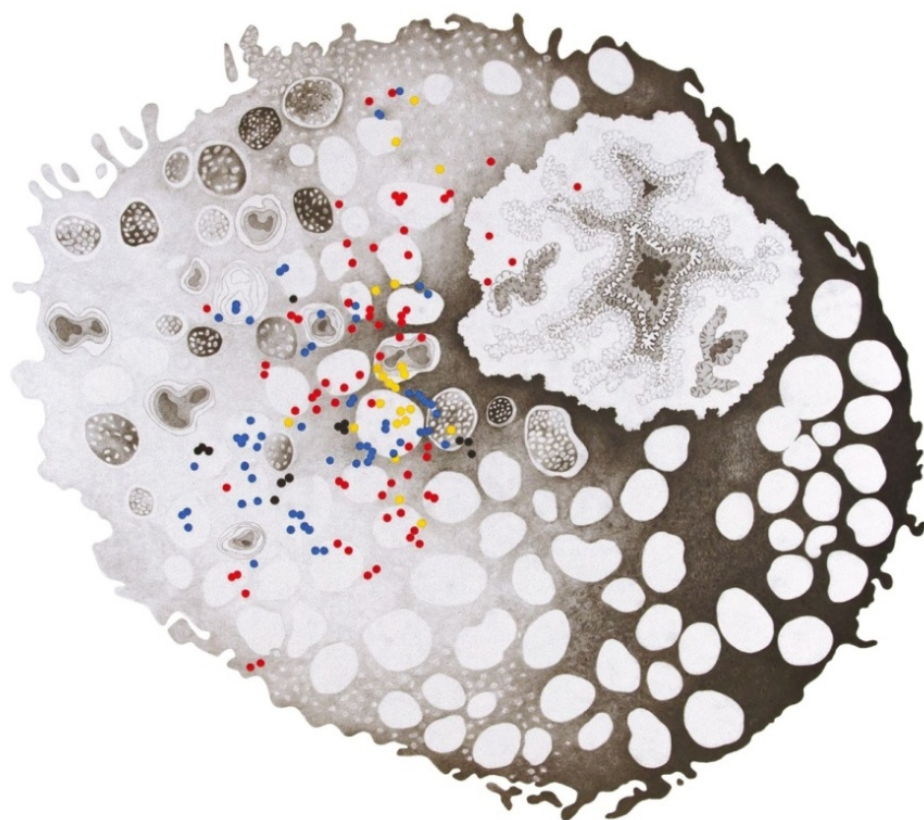
suite members:

andrew bracey • jonathan carson • carson & miller • Julie Cassels • fiona donald • jane fairhurst • Janet Griffiths • lesley halliwell • paul horne • tim machin • susie macmurray • rosie miller • john murray • daksha patel • jo scorah • tom watson •

ARTIST SPOTLIGHT

Daksha Patel tells us what she has been busily working on recently.....

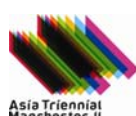
Public Art Commission, Diffusion



Diffusion is a commission for the light boxes at Piccadilly train station, comprising of five new images showing on the Metro link platforms until 30th December. The work was developed following a period of research at The Human Geography department, Manchester Metropolitan University. Daksha worked with Geographical Information Systems to map data about Manchester air quality, noise levels and the growth of the city upon biological structures of the internal body. The work explores relationships of scale; from the micro and the macro, from climate change to inter cellular change. It questions mapping conventions of enclosing spaces within fixed boundaries by drawing attention to the porosity of the body and its interaction with the environment. Central to the project are concerns about the visual representation of scientific data. The project will feature in an upcoming book 'Mapping Manchester', produced by Manchester University in 2012.

The original drawings for the commission are showing in the project space, Cornerhouse until October 18th and the project is part of the fringe programme of the Asia Triennial, Manchester.

The commission is supported by:



Chinese Arts Centre, Whisper residency

In June, Daksha was the 'Whisper' residency artist at The Chinese Arts Centre. Her proposal for the residency involved collaboration with an acupuncturist to examine networks and systems within the body. The result was a series of 'pin' drawings which explore the borderline between surface and depth.



PhD practice-led: Imaging and Imagining the Brain

Daksha will be starting an AHRC funded PhD this October at Northumbria University. Her research proposal involves working with medical collections – anatomical atlases from the 17th and 18th centuries - at The John Rylands Library, Deansgate and collaborating with the medical imaging department at Manchester University. Her drawing practice will be central to the research methodology.